

# Modernization of waste water treatment ARA Werdhölzli, Zurich



**Segment:** Waste water

**End user:** City Zurich, Waste management and recycling

**System integrator:** Rittmeyer AG

**Realization date:** 2010 - 2014

**Requirements:**

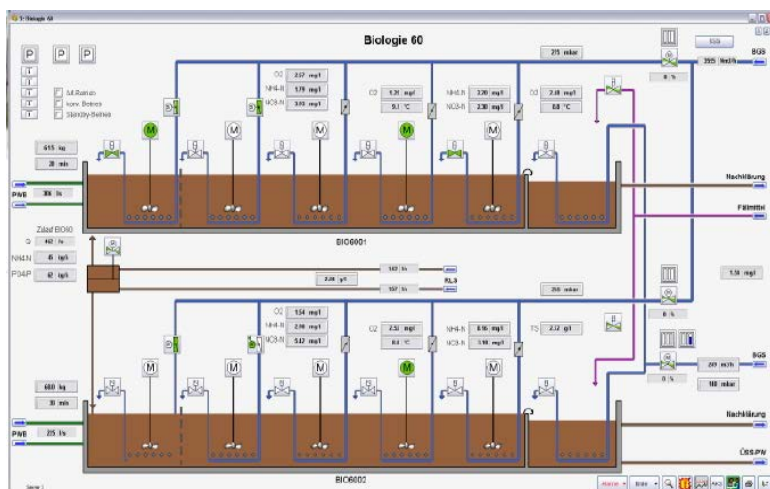
- Industry specific functionalities
- Realization of a migration concept for an uninterrupted replacement of SINAUT LSX to RITOP

**Solution:**

- 3 redundant distributed RITOP systems (in total 26,000 I/O's)
- 20 work stations
- 40 SIMATIC S7-400/300 PLC's
- Integration of sewage system with 30 remote stations
- Industrial Ethernet optic fibre ring

**Benefits:**

- Continuous concept from process control system up to field level



Rittmeyer is WinCC OA OEM partner and develops, manufactures and installs equipment, instrumentation and process control system solutions for the water and energy sector. His control system RITOP is based on WinCC OA.

The waste water treatment plant Werdhölzli purifies the waste water of the city of Zurich and further six communities (in total 670.000 PE).

