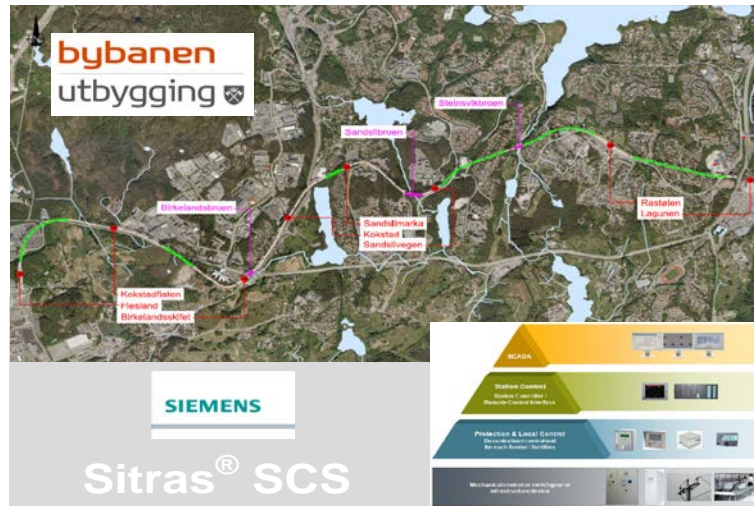


Bybanen Bergen – Train control and visualization with WinCC OA



Segment: Transportation - Passenger Coaches
End user: Bybanen (Bergen)
System integrator: Siemens MO TPE RE EN NC PA
Realization date: 2015

Requirements:

- Quick overview and well-arranged status information for operators and maintenance crew
- Monitoring and control of the main components by a touch-screen display

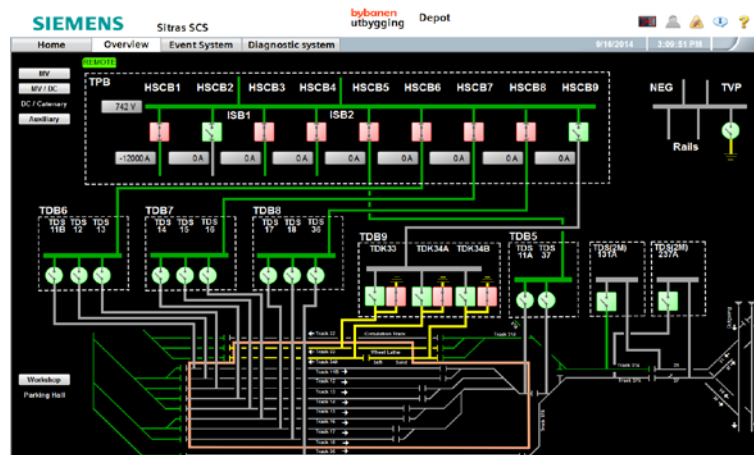
Solution:

- Icon-based user interface for sub-systems and sub-components, quick and easy navigation
- Integrated in the S7-mEC for maintenance tasks and software update
- All operator control actions and information will be carried out and indicated via the associated user interface SIMATIC® SCD1900 and software application of Sitras RSC.
- The HMI unit contains a 19" color graphical display to show process and equipment information. Additionally the remote operable equipment will also be operated via this HMI.

Benefits:

- No additional control device needed
- Shorter maintenance- and repair- time for the maintenance crew due to structured status overview including problem history and environment data snapshots
- Projective touch-screen supports usage with gloves

The Bergen Light Rail System (also called Bybanen) is projected to run approximately 20 km, with double tracked lines, between the Bergen city centre in the north and Flesland airport in the south. *Sitras® RSC is an OEM product based on SIMATIC WinCC Open Architecture. Siemens AG, Mobility, Turnkey Projects & Electrification, Rail Electrification, Network Control is a WinCC OA OEM Partner.*



SIEMENS

bybanen
BERGEN LIGHT RAIL