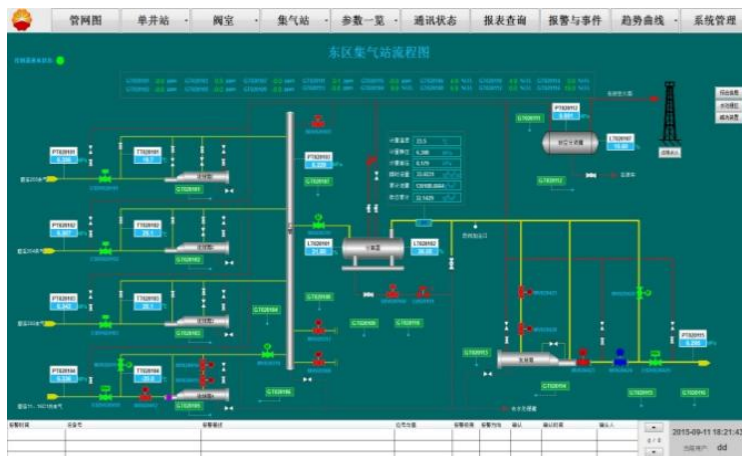
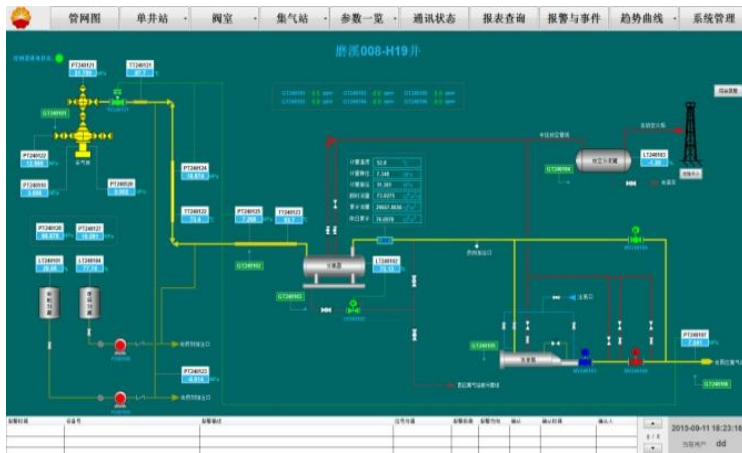


Sichuan An Yue Gas Field (Block MOXI, Dragon King Temple gas reservoir)



Segment: Oil & Gas

End user: Petro China

System integrator: Moore China Southwest Branch

Realization date: 2015

Requirements:

- Integration of SIS and RTU data into independent SCADA system
- Operation & control via three gas stations and one supervisory control center with all data available in all plants

Solution:

- Redundant server pair in central and each one server in the 3 gas stations, data exchange using distributed mechanism
- 30,000 I/O in MCC, 10,000 I/O of each gas stations
- Connection to 33 pcs SIS system (S7-414FH), using S7 driver, 10 pcs RTUs (Motorola ACE3600) via GPRS using Modbus driver

Benefits:

- To enhance the level of automation and control of Dragon King Temple reservoir
- Visualization of data from different subsystems in independent WinCC OA SCADA

Dragon King Temple Moxi gas reservoir is Chinese found the largest single large marine carbonate gas reservoirs ready. From discovery to proven to 1,000,000,000 cubic meters of production engineering production success, with only less than two years. With the continued advance of exploration and development, the gas reservoir of natural gas reserves, production scale will further expand. As of 2013, the cumulative production of more than 600,000,000 cubic meters of gas block.



中国石油天然气集团公司
CHINA NATIONAL PETROLEUM CORPORATION