

# Visualization and operating level of power station



**Segment:** Coal and gas fired power station  
**End user:** ENERGIE AG Oberösterreich (A)  
**System integrator:** Sprecher Automation GmbH  
**Realization date:** 2003 - 2004

**Requirements:**

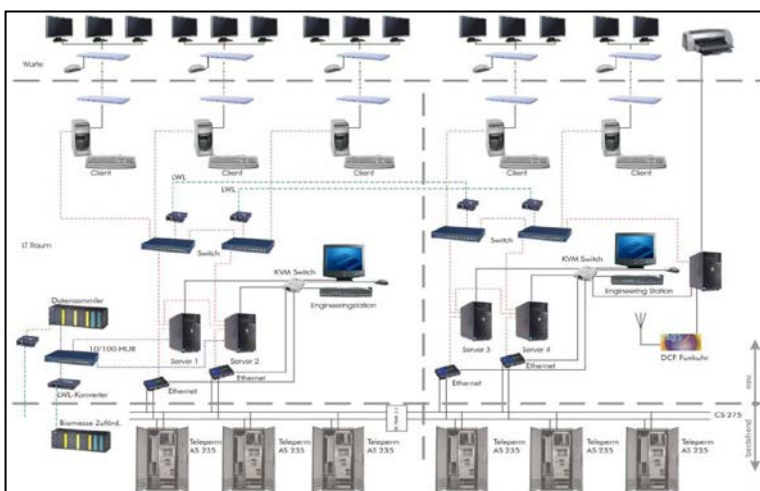
- Migration of control system OS520 (from Teleperm) to Sprecon-V (based on WinCC OA)
- Realize migration as problem free and economic as possible

**Solution:**

- 2 servers in hot standby redundancy per plant area, redundant connection to CS275 bus over gateways
- Available process connector to TELEPERM M/ME CS275 bus system, also any other hardware on field level
- Operation under LINUX

**Benefits:**

- Greatest stability and availability, cost efficiency and long-term investment security



*Sprecher Automation is WinCC OA Partner and develop the SCADA system Sprecon-V, which is an OEM version of WinCC OA.*

*Energie AG is the Number One infrastructure group. With their specialized business segments and subsidiary companies they work in the fields of energy, water and disposal, both in Austria and abroad.*

