

Waste Incineration Plant at Thun, Switzerland



Segment: Incineration plant
End user: AVAG
System integrator: LeitTec AG
Realization date: 2004

Requirements:

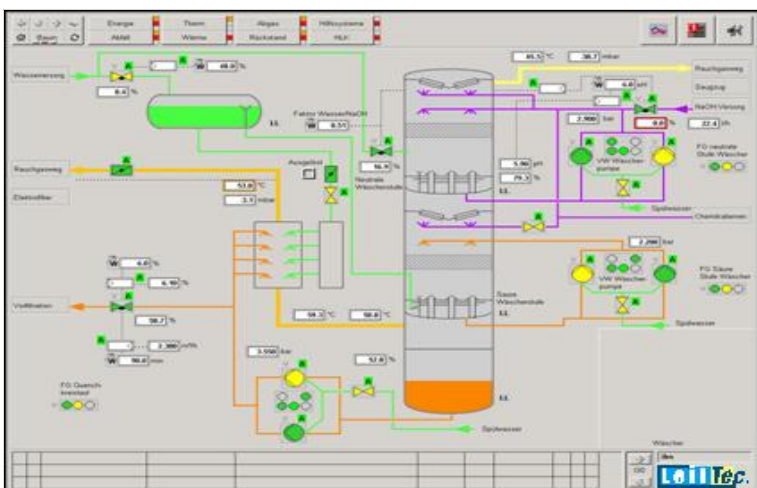
- Integration of several different hardware components
- Combination of information from WinCC OA, Step7, Eplan and MSR data
- Redundancy for high reliability and availability

Solution:

- LeTo MSR database for data management administration of SPS, control level and communication
- 2 redundant WinCC OA server (hot standby)
- 1 data server for backing up archive data and applications

Benefits:

- System independently providing the current MSR data of all control system-related components at the incineration plant
- Help functions on the visualization to support management functions, such as information from the documentation system, display of the circuit diagrams or simplified shift book



Around 100,000 tones of combustible wastes and effluent sludge are thermally utilized environmentally and legally compliantly at the incineration plant at Thun annually.

The thermal energy thereby gained in the incineration process is either converted into electricity or directed into the district heating system.

